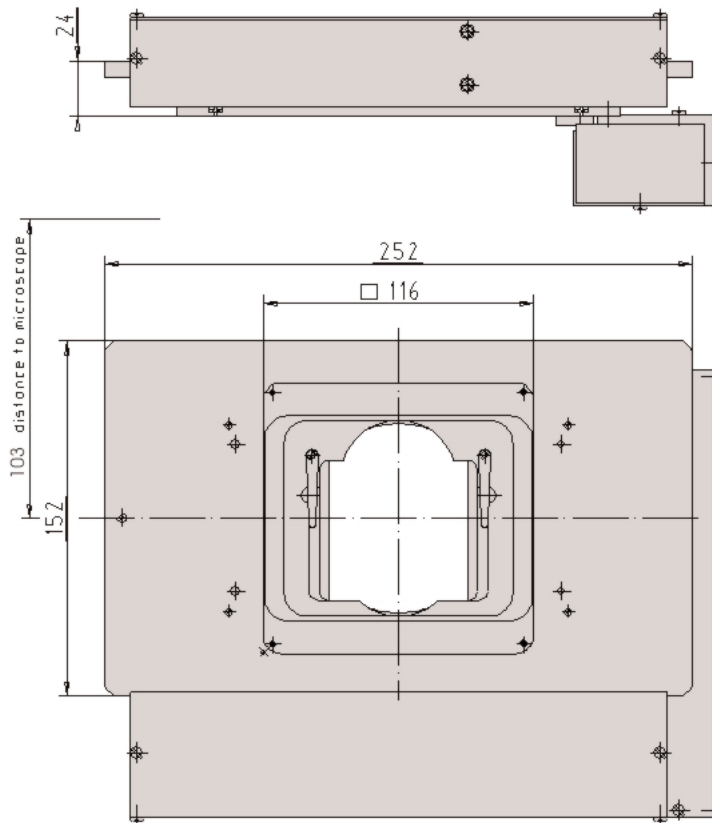




Microscope stages

SCAN 75 x 50
for upright microscopes



Specification

Order information

Part No.: 00-26-403-0000
with 1 mm lead screw pitch

Accessories

Object holder with glass plate
Part No.: 00-29-401-6000
Metal insert
Part No.: 00-24-401-0011

Other accessories on request

The scanning stage SCAN 75 x 50 is specially recommended for biological applications, where precise small steps over a maximum travel range of 75 x 50 mm (3" x 2") are required .

The stage is equipped with an insert frame that holds one standard glass slide 75 x 25 mm (3" x 1"). Alternatively, the stage can be delivered with a plane glass plate, or a solid metal insert.

Travel range:	76 x 52 mm (3" x 2")
Repeatability:	< 1 µm*
Accuracy:	+/- 3 µm*
Resolution:	down to 1,5 nm* (0,0015 µm)
Motor:	2-phase stepper motor
Max. travel speed:	45 mm/s, 1 mm lead screw pitch
Weight:	2.500 g

* Specifications valid with MÄRZHÄUSER stage controller only

For more detailed information, please visit our web-site at: www.marzhauser.com

Märzhäuser GmbH & Co. KG
In der Murch 15
35579 Wetzlar-Steindorf
Tel.: +49 (0) 64 41/91 16-0
Fax: +49 (0) 64 41/91 16-40
eMail: info@marzhauser.com
www.marzhauser.com