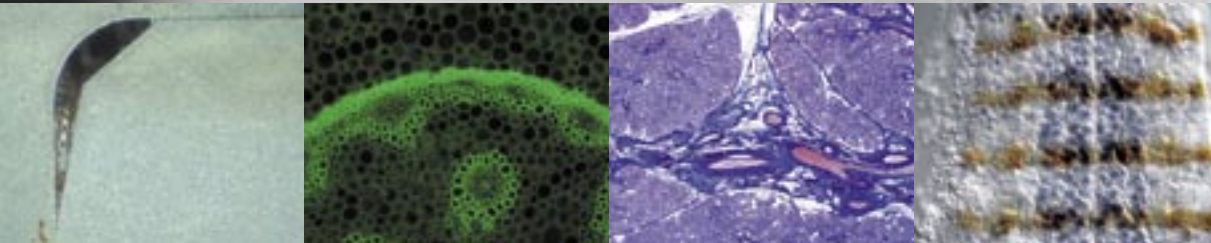


it's time to change your point of view



Precision in true color – ProgRes® C14^{plus}

The new **ProgRes® C14^{plus}** – our solution for your requirements to best color reproduction and highest resolution in all light microscope related contrast methods. Superior image quality and high flexibility are the outstanding features of this camera.

On account of the high precision Microscanning and Color Co-Site-Sampling the hermetically sealed and thermoelectrically cooled 1.4 mega pixel color sensor generates a image resolution of up to 12.5 mega pixels in true colors – without calculated interpolation.

The **ProgRes® C14^{plus}** offers high dynamic range at an excellent signal to noise ratio. Sensor, cooling, mechanic design and

sophisticated electronics including analogue gain perfectly fit together, delivering precise details in your images, digitized in 14 Bit per color channel. The selectable read out speed of the sensor, 25 MHz for fast live mode and fast image rates and 12.5 MHz for highest demands on image data, combine the optimum in workflow and best image quality in one single camera. Of course, the camera can be triggered.

The universal interfaces like FireWire®, C-Mount and Twain PlugIn offer easy adaptation of **ProgRes® C14^{plus}** to all current microscopes and PC's. The user-friendly **ProgRes®** Capture Software, as well as updates available online, are included in the scope of delivery.

ProgRes® C14^{plus}

- *Microscanning for up to 12.5 mega pixel resolution.*
- *Color Co-Site-Sampling for true colors.*
- *Selectable read out speed, high speed live image.*
- *Analogue gain for high dynamic range.*
- *Switchable cooling for low noise.*
- *User-friendly capture software.*



ProgRes®
C14^{plus}



Application in contrast methods:

- Bright-/ Darkfield
- Phase contrast
- DIC
- Fluorescence
- Stereomicroscopy
- Repro-Photography

In the fields of:

Live-Science

- Genetics
- Microbiology
- Pathology
- Histology
- Hematology
- Cytology
- Zoology

Material sciences

- Quality control
- Geology
- Mineralogy
- Chemistry
- Semiconductor industry
- Industrial inspection

Forensics

Technical Data

CCD Sensor	2/3" 1.4 Mega pixel Progressive Scan CCD Image Sensor Typ: Sony ICX285AQ Active Area: 8.8 x 6.6 mm ²	
Pixel area	1360 x 1024 Pixel	
Pixel size	6.45 x 6.45 µm	
Read-out frequency	Switchable: 12 MHz and 24.5 MHz	
IR cut-off filter	Hoya C-500S	
Dynamic range	ca. 66 db/typical: >2000:1	
Digital output	14 bit RGB	
Exposure time	Up to 600 s	
Gain	Analogue 1x to 8x	
Image refresh rate	Up to 51 fps	
Image resolution	Programmable Resolution	
	1360 x 1024 (1shot)	272 x 204 (5x Binning)
	1360 x 1024 (4shot)	340 x 256 (HFRM)
	2720 x 2048 (16shot)	453 x 340 (3x Binning)
	4080 x 3072 (9shot)	680 x 512 (HFRM)
	4080 x 3072 (36shot)	
Cooling	Peltier-Element and fan (switchable)	
Digital interface	FireWire® IEEE1394a (power & data)	
Optical interface	C-Mount (0.63x TV Adaptor for microscope usage)	
Tripod thread	Dual thread 3/8" and 1/4"	
Software	ProgRes® Capture Software for MS Windows® 2000/XP (TWAIN and Stand-Alone) SDK for MS Windows® and Apple Macintosh OS X	
Hardware requirements	PC: Pentium IV 1.4 GHz or better; ≥512 MB RAM; FireWire® (OHCI Standard)	
Power consumption	MAC: G4 or better; 512 MB RAM	
Weight	7 W	
Dimension	800 g / 1.76 lbs	
Operating conditions	145 x 93 x 123 mm / 5.7 x 3.6 x 4.85 in (L x W x H)	
	Temperature: +5°C to +35°C (41°F to 95°F)	
	Humidity: 5%–80%, not condensing	

Registered in the U.S. Patent and Trademark Office.

This design and related specifications are subject to continuously ongoing development. We reserve the right to make changes in the interest of technical progress.

JENOPTIK
Laser, Optik, Systeme GmbH
Business Unit Sensor Systems
07745 Jena, Germany
Phone +49 3641 65 39 63
progres@jenoptik.com
www.progres-camera.com

Your direct sales agent for high-grade microscope cameras: