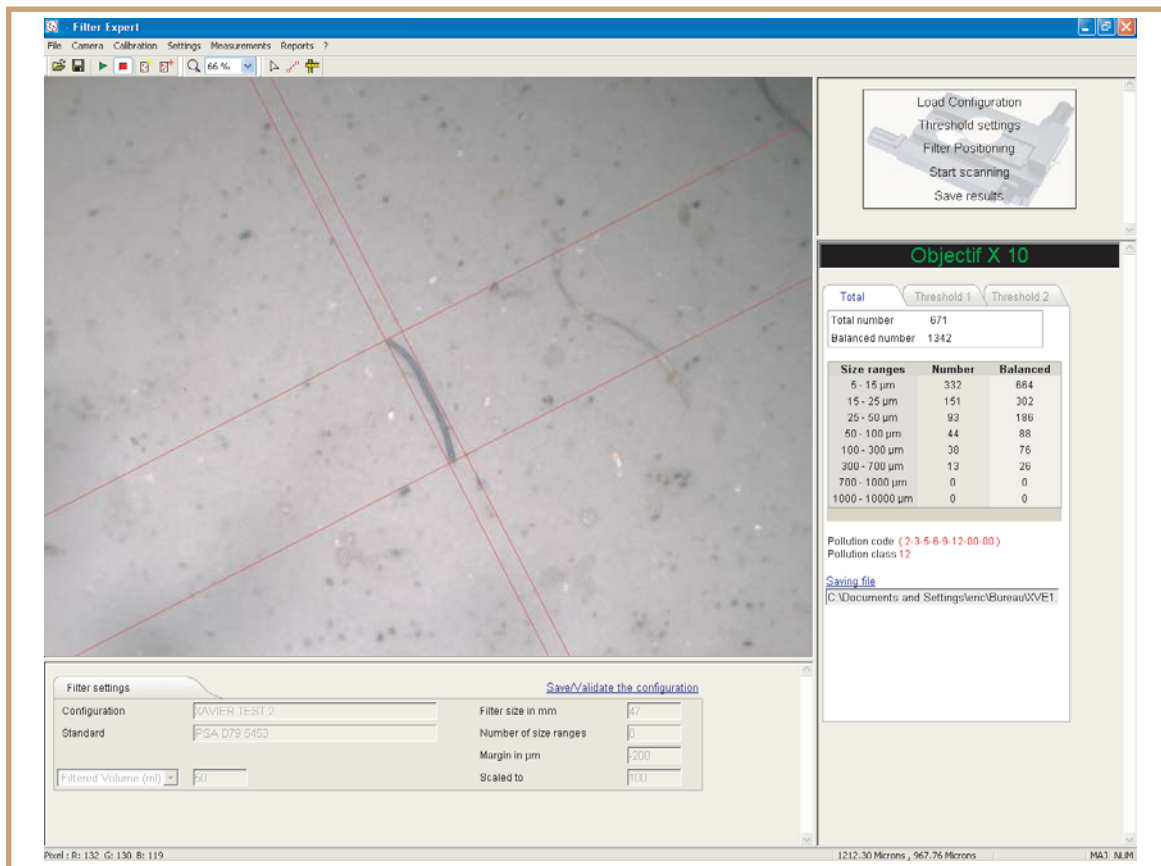


FILTER EXPERT

SOLUTION FOR CLEANLINESS CONTROL

FAST, ACCURATE, REPRODUCIBLE



- ▶ Dedicated solution for easy cleanliness measurement
- ▶ Fast XY motorized stage for complete filter scanning
- ▶ Elaborate image processing for accurate particles detection
- ▶ User defined particles and fibers classification
- ▶ Professionnal reports with customized forms
- ▶ Compliance with international standards

FILTER EXPERT CLEANLINES CONTROL TO QUALITY



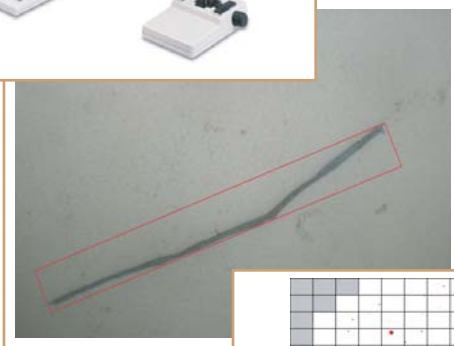
HIGH RESOLUTION IMAGE CAPTURE

Minimize scanning duration and improve measurements accuracy with high resolution digital camera. High resolution images allow particles detection less than 1 micrometer in compliance with the most stricts international standards.



FAST FILTER SCANNING

Take benefit of complete automation to suit your high productivity request. The X/Y high precision motorized stage fits to any stereo microscopes or transmitted/reflected microscopes with optional autofocus Z axis.

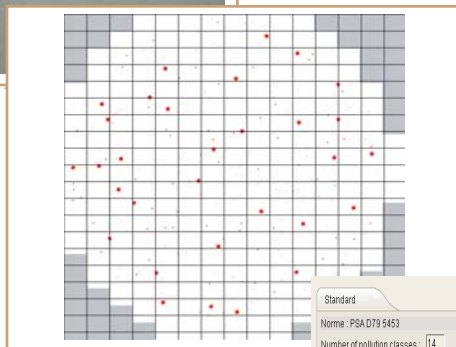


POWERFUL MEASUREMENTS

With our high performance tresholding algorithm even smallest particles are detected and large objects crossing more than one field are perfectly reconstructed. These powerful features make Filtre Expert station an unmatched solution for stringent customers.

FILTER MAPPING

Filtre Expert sequentially creates a complete map of the analyzed filter. This overview lets user control counting and allows manual measurement corrections.



FULLY CUSTOMIZABLE CLASSIFICATION

Filtre Expert is in compliance with the international standards (NF L41-101/NF E 48-655/ISO-DIS 16232-7.2). Particles and fibers classification settings are fully customizable to match specific manufacturer standards.

Standard
Norme : PSA D79 5453
Number of pollution classes : 14

Indices	Classes de pollution													
	00	0	1	2	3	4	5	6	7	8	9	10	11	12
[5,15]	125	250	500	1000	2000	4000	8000	16000	32000	64000	128000	256000	512000	1024000
[15,25]	22,25	44,5	89,1	178,13	356,25	712,5	1425	2850	5700	11400	22800	45600	91200	182400
[25,50]	3,96	7,91	15,82	31,64	63,28	126,56	253,13	506,25	1012,5	2025	4050	8100	16200	32400
[50,100]	0,7	1,4	2,81	5,63	11,25	22,5	45	90	180	360	720	1440	2880	5760
[100,300]	0,12	0,24	0,48	0,95	1,9	3,8	7,6	15,2	30,4	60,8	121,61	243,22	486,43	972,86
[300,700]	0	0	0	0,05	0,09	0,18	0,36	0,72	1,44	2,88	5,76	11,52	23,04	46,07
[700,1000]	0	0	0	0	0	0,01	0,03	0,05	0,10	0,2	0,39	0,79	1,58	3,15
[1000,10000]	0	0	0	0	0	0	0,015	0,03	0,06	0,12	0,24	0,48	0,96	1,92

Additional imaging solutions to match your specific requirements :

- PERFECT IMAGE** : Powerful software tools for material applications (manual measurements, phase content, image database, image enhancement...)
- GOLD** : Optional image analysis extension for auto/manual objects counting and classification.
- GRANI** : Grain sizing assessment according to ASTM E112 and EN ISO 643 standards.
- CAST IMAGER** : Nodular cast iron analysis according to EN ISO 945 standard.

CLARA VISION

14 Square de la poterne
91300 MASSY - FRANCE

Phone : 33 1 69 86 01 30 - Telecopy : 33 1 69 28 24 61

www.claravision.com - info@claravision.com