

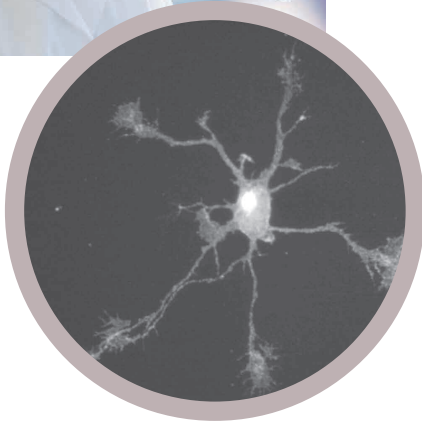
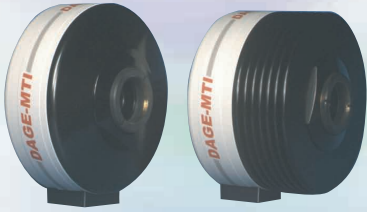
Dage IR1400 Infrared Camera

DAGE-MTI

dage technologies

Features and Benefits

The IR-1400 digital camera is ideal for applications requiring real-time imaging with enhanced sensitivity in the near infrared and visible regions. Through a simple computer connection, the IR-1400 camera provides a high performance, easy-to-use solution for digital imaging. The Image D-IR software features a multitude of image enhancement controls for quantitative analysis. The cooling option provides extended exposure for increased sensitivity in low light level situations



sample image from IR1400

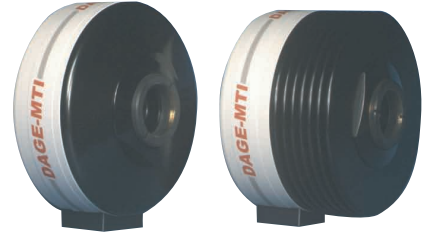
Infrared Sensitivity	Excellent sensitivity in near IR and entire visible spectrum Response from 380nm to 1200nm
Real-Time Video Output	768 (H) x 494 (V) @ 30 fps 10-Bits
IEEE 1394 Firewire	Simple installation and use Compatible with laptop computer
External Sync & Trigger	Allows synchronizing capture to external events
Versatile Exposure Control	Automatically adjusts gain and shutter to achieve correctly exposed image Allows for exceptional image results, even under difficult lighting conditions Wide range exposure (63us to 67 seconds)
Full Screen Mode	Provides unobstructed view of image
Five User Presets	Easily programmed to recall user-specified setup routines
Time Lapse/Streaming Video	Allows time lapsed and real-time video capture to be saved as movies
Averaging	Reduces random video noise
Background Subtraction	Removes unwanted background artifacts
Flatfield Correction	Corrects for illumination non-uniformities such as lens vignetting or shading
Quantitative Analysis Tools	Line Profile • Pixel Values • Image Histogram
Simultaneous Analog Output	Connects to video rate monitor for multiple displays
Cooling (Optional)	Allows for longer exposure times for increased sensitivity
Image D-IR Software	Full featured camera control software Simple, easy-to-use instructions included

The IR1400 is well suited for the following applications:

- Near IR
- Brightfield, Phase Contrast, and Darkfield Microscopy
- Flourescence Microscopy
- Electrophysiology
- Semiconductor Inspection
- Manufacturing Quality Control
- Failure Analysis
- Forensic Analysis
- Teaching and Documentation

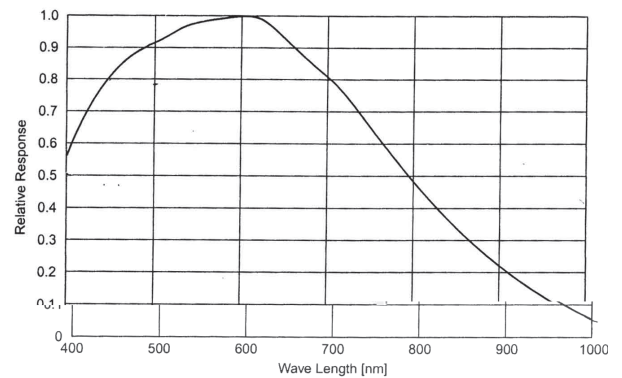
SPECIFICATIONS

CCD Pixels	768 (H) x 494 (V)
Pixel Size	8.4um (H) x 9.8um (V)
Signal-to-Noise	60dB @ 0dB gain
Sensor	1/2" Sony EXview-HAD (ICX428), Monochrome
Sensitivity	0.051 fc @ 0dB gain, 30 fps (full signal output)
Digital Output	10Bits
Frame Rate	30 fps standard 60 fps in 2x2 binning
Digital Interface	IEEE 1394 Firewire, 6 pin
Gain	Automatic/Manual 0-30dB
Exposure/Integration	63.5us to 67 seconds
Aux Output	Video, RS-170A Enable Line, Enable Field Sync/Strobe
Aux Input	Trigger +TTL (high to low)
Lens Mount	C mount with adjustable back focus
Tripod Mount	1/4"-20 tapped hole, 0.25" deep
Dimensions	Head: 4" Diameter x 2.125" deep Head Cooled: 4" Diameter x 3" deep P/S: 2.6" W x 4.2" L x 1.5" D Cooled P/S: 3.75" W x 6.25" L x 3"D
Weight	Head: 14.5 oz (412g) Cooled Head: 25 oz (706g)
Software	Image-DIR capture software, 3rd party specific,
Image-DIR Software	Region of Interest Post Process control of brightness, contrast, gamma Background Subtraction Flatfield Correction Pixel Value Image Profile Image Histogram Zoom with Pan/Scroll Timelapse & Streaming Capture
Operating Systems	Windows®2000, SP4; Windows®XP, SP1 & SP2
Options	IEEE-1394 PCI card, Laptop kits
File Format Support	TIFF, BMP



The The IR-1400 Infrared camera is ideal for applications requiring real-time imaging with enhanced sensitivity in the near infrared and visible regions. Through a simple computer connection, the IR-1400 camera provides a high performance, easy-to-use solution for digital imaging. The Image D-IR software features a multitude of image enhancement controls for quantitative analysis. The cooling option provides extended exposure for increased sensitivity in low light level situations.

SPECTRAL SENSITIVITY CHARACTERISTICS



Dage-MTI **219.872.5514**

Call for product information or for free product demos